

Activity Diagrams

Ferd van Odenhoven

Fontys Hogeschool voor Techniek en Logistiek

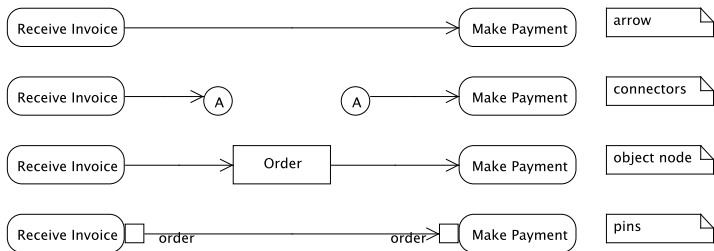
May 27, 2015

Pins & Transformations

Edge/Flow Control flow or object flow: describe how the order of actions takes place.

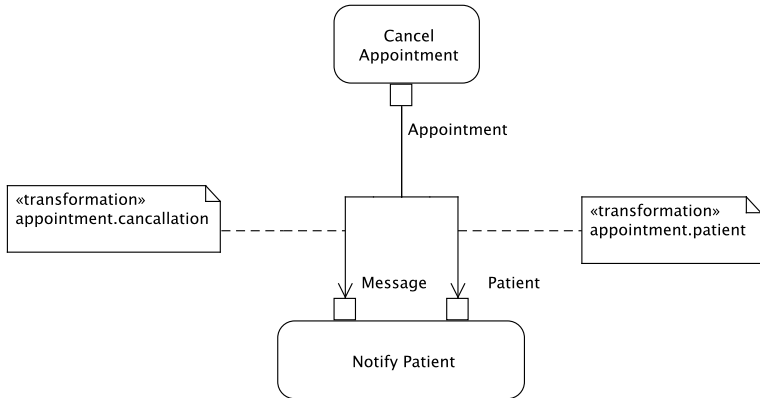
Pins Are optional. If actions do need a parameter, pins can be used to indicate them.

Transformation If pins differ on opposite sides, a transformation is needed.



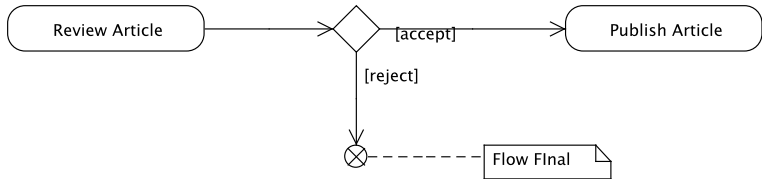
Pins & Transformations

Indicating a transformation, in order that the the correct object appears at the input pin. `appointment.cancellation`



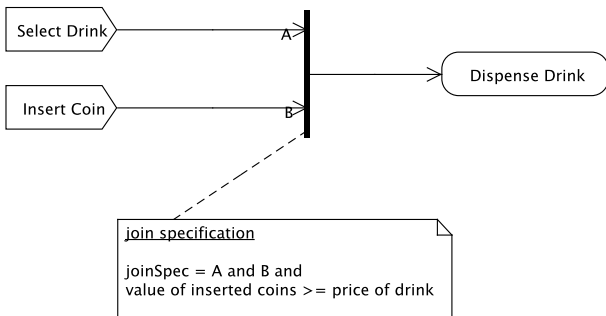
Flow Final & Tokens

- An action might create a token that will be handed over after completion of the action.
- If at a decision the flow goes in the direction “Flow Final”, the token will be removed.



Join specification

- A join will pass the flow on, if and only if all flows have reached the join.
- It is possible to add extra conditions to a join.



Finally: TODO

- Try to find and define a process in your case study, which could be better described by an activity diagram.